

1.

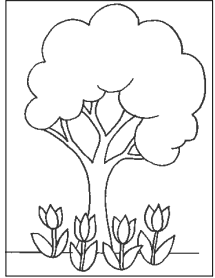


IL PALAZZO E' ALTO O BASSO?

A ALTO

B BASSO

2.

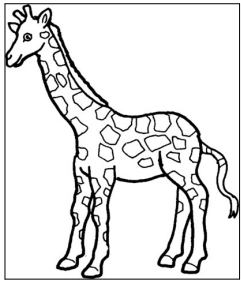


I FIORI SONO ALTI O BASSI?

A ALTI

B BASSI

3.

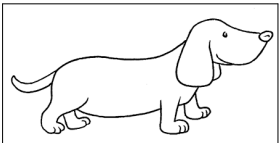


LA GIRAFFA E' ALTA O BASSA?

A ALTA

B BASSA

4.



IL CANE E' ALTO O BASSO?

A ALTO

B BASSO

5.

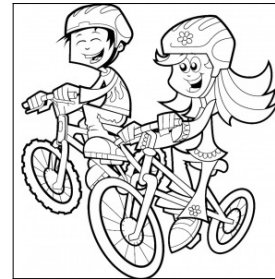


I CAPELLI DEL BAMBINO SONO CORTI O LUNGI?

A CORTI

B LUNGI

6.

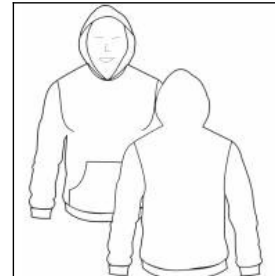


I CAPELLI DELLA BAMBINA SONO CORTI O LUNGI?

A CORTI

B LUNGI

7.

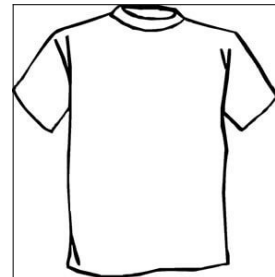


LE FELPE HANNO LE MANICHE CORTE O LUNGHE?

A CORTE

B LUNGHE

8.



LA MAGLIETTA HA LE MANICHE CORTE O LUNGHE?

A CORTE

B LUNGHE